

# PYP NEWSLETTER

2021-2022



..vision..

RIS is dedicated to create a supportive learning community for open-mindedness and life-long learning.



cognia

مدرسة رند العالمية  
Rand International School



.. Mission ..

Provide a caring, safe and warm learning community with rich curricular and co-curricular programs that stimulate curiosity, freedom of expression, intercultural understanding and life-long learning.



## SHARING THE PLANET

Sharing the planet (An inquiry into rights and responsibilities in the struggle to share finite resources with other people and with other living things; communities and the relationships within and between them; access to equal opportunities; peace and conflict resolution...)"

Central idea: Biodiversity relies on maintaining their interdependent balance of Organism within an ecosystem.

Key concepts: Principled, balanced, and carrying

IB profile(attributes): Connection and responsibility.



Dear readers,

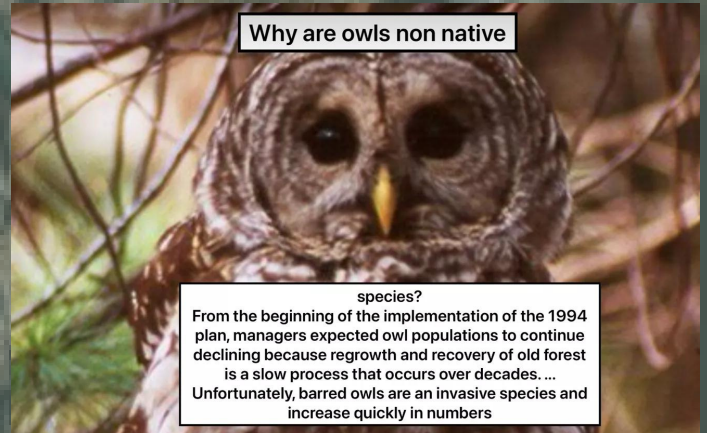
Sharing the planets is a theme in which concepts attitudes, Bro file and skills can be touched a bone, refined and enhanced. Students explore the canvas of worldly knowledge with freedom, foresight and anticipation.

The students understand that humans are caretakers of the earth, not merely a ruler. The essential understanding of the tiny yet all the important elements that form the world around us in consideration to the biodiversity and its independence in nature. In constructing reason arguments are theories based on evidence and to increase understanding in the different field of inquiry by being a researcher and finding out why some parts of the world are more diverse than others an understanding how they economy enhance a country to maintain a good source of living



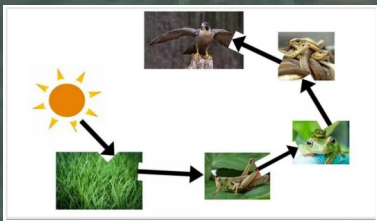


# LEARNING TO LOVE, LOVING TO LEARN THROUGH COMMITMENT AND COURAGE



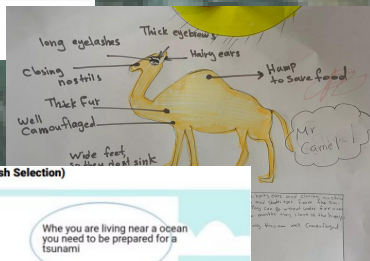
Why are owls non native

species?  
From the beginning of the implementation of the 1994 plan, managers expected owl populations to continue declining because regrowth and recovery of old forest is a slow process that occurs over decades. ... Unfortunately, barred owls are an invasive species and increase quickly in numbers

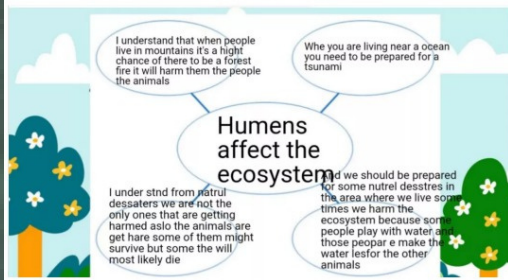


cause and Effect: peer work with eman

cause: wearing broken glasses and plastic bags / effect: hurting the animals and the corals in the ocean



Humans affect the ecosystem - Reflection. (English Selection)



**Research on Non-Native Species:**  
Non-native species are those that have occurred outside of their natural range. That natural range could be as far as another country or as near as a different region of the same country. Unlike invasive species, non-native species may not hinder or prevent the survival of others within the ecosystem. The students' research is on Non-Native Species and finds out its interconnection with nature and its role in the ecosystem.

They are focusing on how the animal looks like, Students support their research with videos, photos, and also a sound recording of the species. Additionally, Students add more direct effects and details while connecting its food chain, food web of in the ecosystem.

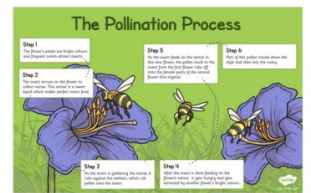
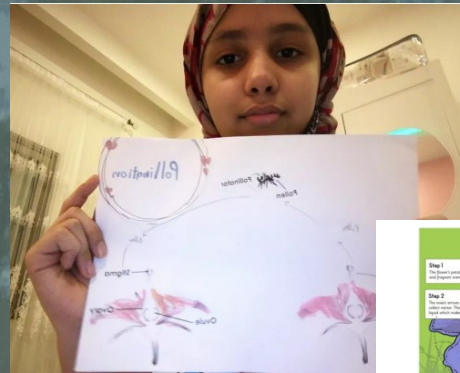




# THE KEY TO GREENER PLANET IS IN OUR HANDS



The best time to plant a tree was 20 years ago. The second best time is now.” With the ownership of self advocacy the students plant trees in order to give back! By which we create such an awareness among the students who takes responsibility of their actions in preserving Earth’s resources.



It allows a plant species with a minimal foothold in an area to grow and prosper, claiming more of its surrounding habitat. It helps reseed areas devastated by natural disasters, predators, or other damaging influences. Pollination is both a fast forward and a reset button, depending on the needs of the habitat surrounding it.

The students also participate in pre- planting activities that connects them to the benefits of trees.



## Grade – 5 Field Trip to Mangrove- Tarut

Name: Sylla Najdi G5A Oct.28, 2021

In complete sentences, tell what was your favorite part about this field trip?

*My favorite part was to meet my friends, teacher and explore the mangrove.*

Why? – *It was my favorite part because it was interesting to learn something new and understand more about the ecosystem.*

In complete sentences, tell about two new things you learned.

*I learned about the how do mangrove protect the humans to be safe from heavy water flow and reduce the risk of water entering the city.*



One Tree Planted's school program brings environmental education in a garden through fun and engaging lessons and activities. Students serve as the primary planters which allowed them to take ownership of the project and responsibility for the trees.



# BUILDING IN BRILLIANCE

What a pleasure it is to see the **OUR PLANET** students developing and demonstrating an understanding of the IB Learner Profile which is central to the teaching and learning at our school!

**Claim-Evidence-Reasoning (C-E-R)**  
Grade - 5 Student Graphic Organizer

<b>C</b> (Claim) Write a statement that responds to the question.	In plain, clear, and concise language, explain the claim. Add reasons to the claim and support up claims for the claim to go from the ground. Negative effects on the ecosystem are not for example? Support your claim with evidence from the text and some people don't care and go back home with out knowing of the fire and the start to go over were used to all from the forest and the animals and it's some animals survive. But the trees and the grass is killed and it will destroy the ecosystem or the forest which is a positive change is that some plants only grow up when there's smoke.
<b>E</b> (Evidence) Provide scientific data to support your claim. Your evidence should be appropriate (relevant) and sufficient (enough) to convince someone that your claim is correct. This can be bullet points instead of sentences.	the evidence is that we read the article and we found out some of the evidence that it has both positive and negative impact on the ecosystem
<b>R</b> (Reasoning) Use scientific principles and knowledge that you have about the topic to explain why your evidence (E) supports your claim. In other words, explain how your data prove your point? (Paragraph format)	because we researched about the wild fire we understood so many things about wild fire, so we fill the boxes as we understood


**Grade - 5 Field Trip to Mangrove- Tarut**  
Name: Haaf Taha Oct. 28, 2021

In complete sentences, tell what was your favorite part about this field trip?  
My favorite part is when we go to explore the place and when I saw my friend's teacher why? because it's a fun activity to learn about ecosystem and it's really cool to see my teacher.

In complete sentences, tell about two new things you learned.  
I learned about food chains and food webs.

In a complete sentence, tell one thing that connected to your learning or previous knowledge (I already knew...and today I saw...).  
My friend knew what is a mangrove and today I saw the interaction between the organisms on the mangrove helps fight climate change

**Share your Art Projects related to the Ecosystem**  
You can share the Art project on the left side and share your reflection about it.



- It was a fun activity, we enjoyed making the project its really cute.
- Everything about ecosystem was fun and we wish to work more and more about this topic.

**Share your Engineering Projects related to the Ecosystem**  
You can share the Engineering Project on the left side and share your reflection about it.



- It was a really fun project to do an ecosystem by our self and now we can care about the ecosystem without people harming it and there is no trash there.
- This project helped us to learn how small ecosystem can be created and it lives well in a bottle.

**CHANGING Human Impact**  
Develop a new method for continuing human activity (growth, development, and technology) while preserving natural habitats.

The human impact I plan to change:  
Humans change their plan when they see Ecosystem around themselves so they kill Ecosystem like plants and animals that are Living near to them

Causes and Effects of this human impact:


People throw trash in the earth	It kills ecosystem
Humans affect animals	It affect ecosystem
Humans throw food away	Other humans die because they don't have food



**Environmental Benefits of Pollination**

1- **Clean Air (Carbon Cycling/Squestration)**  
Flowering plants produce breathable oxygen by utilizing the carbon dioxide produced by plants and animals as they respire. Pollinators are key to reproduction of wild plants in our fragmented global landscape. Without them, existing populations of plants would decline, even if soil, air, nutrients, and other life-sustaining elements were available.


2- **Water and Soil**  
Flowering plants help to purify water and prevent erosion through roots that holds the soil in place, and foliage that buffers the impact of rain as it falls to the earth. The water cycle depends on plants to return moisture to the atmosphere, and plants depend on pollinators to help them reproduce.



**Pollination is important** because it leads to the production of fruits we can eat, and seeds that will create more plants. Pollination begins with flowers. Flowers have many parts that produce very small grains called pollen. Pollination is the transfer of pollen grains from one flower to another.

Many insects help move pollen between flowers and act as "pollinators". Butterflies, moths, bees, and flies are examples of insect pollinators. When a pollinator visits a flower it is looking for food but while feeding these insects accidentally transfer pollen grains between flowers and help the plants produce fruits and seeds.

The images below were taken using a scanning electron microscope and show the microstructure details of insect pollinators and of the pollen they help transfer.



**Collect the Facts**

- What to research about each change:
- What causes this change to occur?
- What effect does this change have on ecosystems?
- How can negative impacts of this change be prevented?

A change in ecosystems: Might effects animals and growing plants because their lives change

Fact or Detail: The details is that ecosystem when it change it can effect living things and humans

Reference: Plants and animals need help from people because of their health

Fact or Detail: Some time when ecosystem changes maybe it means that plants grow and animals are still living and animals have food

Reference: if people throw trash at the ecosystem it will affect humans and animals and plants and other living things

Fact or Detail: Ecosystem can change the environment and causes a environmental change in our lives and causes people a lot of things

Reference: we must protect the environment and ecosystem

A change in ecosystems: A change in ecosystem might destroy the nature

Fact or Detail: Environmental changes might affect humans and ecosystem by it changing

Reference: Humans some time think about the things they do to the ecosystem

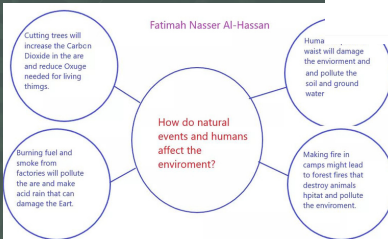
Fact or Detail: People around the world wonder if how plants grow with trash around them

Reference: we must protect the environment and ecosystem

change how this activity impacts the

When ecosystem changes humans can be affected because humans all around them is plant and animals

Environmental changes can affect ecosystem and when an ecosystem changes it makes animals and other living things lives ch



**EVIDENCE TASK CARD 4**

**CLIMBING OBSTACLES**

Mount Everest is the highest mountain peak in the world. It is over 29,000 feet tall or five and a half miles above sea level. Thousands of climbers try and make the treacherous journey to the top. However, less than 1,000 have successfully made it to the top. Consider the most inspirational climbers is Erik Weihenstephan

On May 25, 2000, he became the first blind person to reach the top of Everest's summit. Erik took his usual route to the top. He began rock climbing when he received a letter from his brother about a group taking blind hiking rock climbing. Erik loved the challenge and freedom thinking provided. This plan was the seed that would lead to him accomplishing something no one else over had before.

**SHOW YOU KNOW**

1. What is Erik Weihenstephan?

2. What caused Erik to make this journey?

3. What does Erik's phrase "Plant the seed" mean?

4. Why does Erik love to rock climb?



In a nutshell, the theme proved to be a journey of discovery and learning; of deep realization that we humans, animals and plants reside on a planet which owes its life to a finite different resources.