

# PYP NEWSLETTER 2021-2022



..vision..

RIS is dedicated to create a supportive learning community for open-mindedness and life-long learning.



**cognia**

مدرسة رند العالمية  
Rand International School



.. Mission ..

Provide a caring, safe and warm learning community with rich curricular and co-curricular programs that stimulate curiosity, freedom of expression, intercultural understanding and life-long learning.

## WHERE WE ARE IN PLACE AND TIME

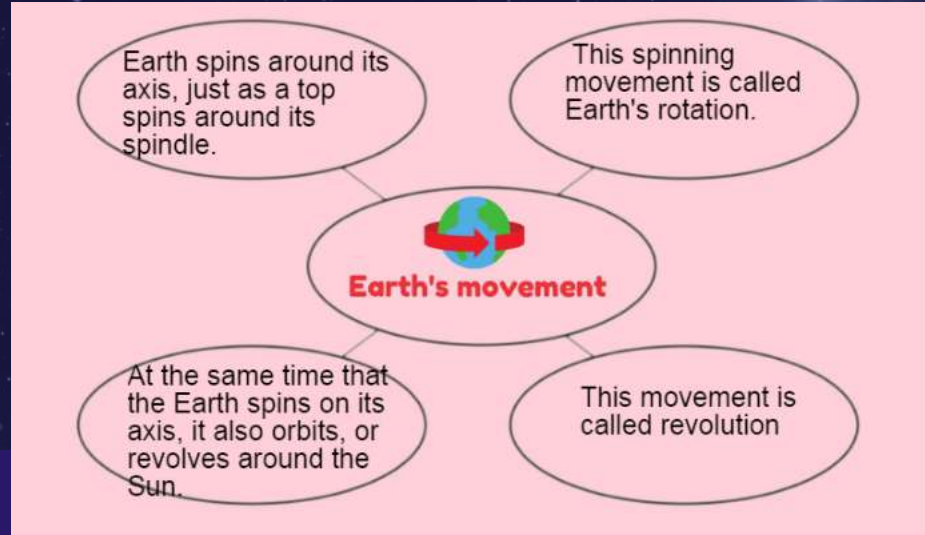


An inquiry into orientation in place and time; personal histories; homes and journeys; the discoveries, explorations, and migrations of humankind; the relationships between and the interconnectedness of individuals and civilizations, from local and global perspectives.





# VENN DIAGRAM HELPED THE STUDENTS TO START THEIR INQUIRY.



## outer planets

The outer planets are gas giants Jupiter and Saturn and ice giants Uranus and Neptune. Beyond Neptune, a newer class of smaller worlds called dwarf planets reign, including longtime favorite Pluto. Thousands more planets have been discovered beyond our solar system.

DURING THIS UOI, STUDENTS RESEARCHED FOR QUESTIONS, OBSERVING, PLANNING, COLLECTING DATA, RECORDING DATA, ORGANIZING DATA, INTERPRETING DATA, AND PRESENTING RESEARCH FINDINGS AS WELL AS MODELING THEIR LEARNING.

### INNER PLANETS

BY ZAINAB ALARAFAT

Mercury, Venus, Earth, and Mars

they have a compact, rocky surface

None of the terrestrial planets have rings.

only Earth has a substantial planetary magnetic field

Earth's moon orbits the planet once every 27.3 days at an average distance

The number of moons orbit the planets from 0-2





# INTEGRATION OF ENGLISH WITH UOI POINT OF VIEW'S



## Author's Point of View: 3.RI.6: I can distinguish my own point of view from that of the author of a text

What was the topic of the text you read?

brownie the chameleon pet is lost

What was the author's point of view on the topic?

Sam failed to care for brownie, and it was lost.

Use text evidence to support your answer above.

sam telling alex : brownie is just a lizard

alex: dont you want to find brownie, or are you thinking out of mind?

Do you agree or disagree with the author's point of view? Explain.

I agree with the author since Alex seems to care more for her sister Sam than she does about brownie.

### My Vocabulary Log

Definition

You think that someone or something is wrong or can't be trusted

Synonym/Antonym

Doubtful

Vocabulary Word

Suspicious

Used in a Sentence

She was suspicious about my attitude until I reassure her.

Illustration



WHERE DO RED PANDA LIVE

Red pandas live in the Eastern Himalayas in places like China, Nepal, and Bhutan. They spend most of their time in trees. Their semi-retractable claws help them move easily from branch to branch



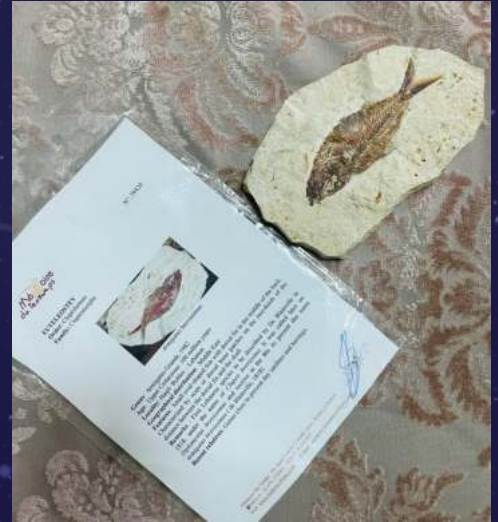
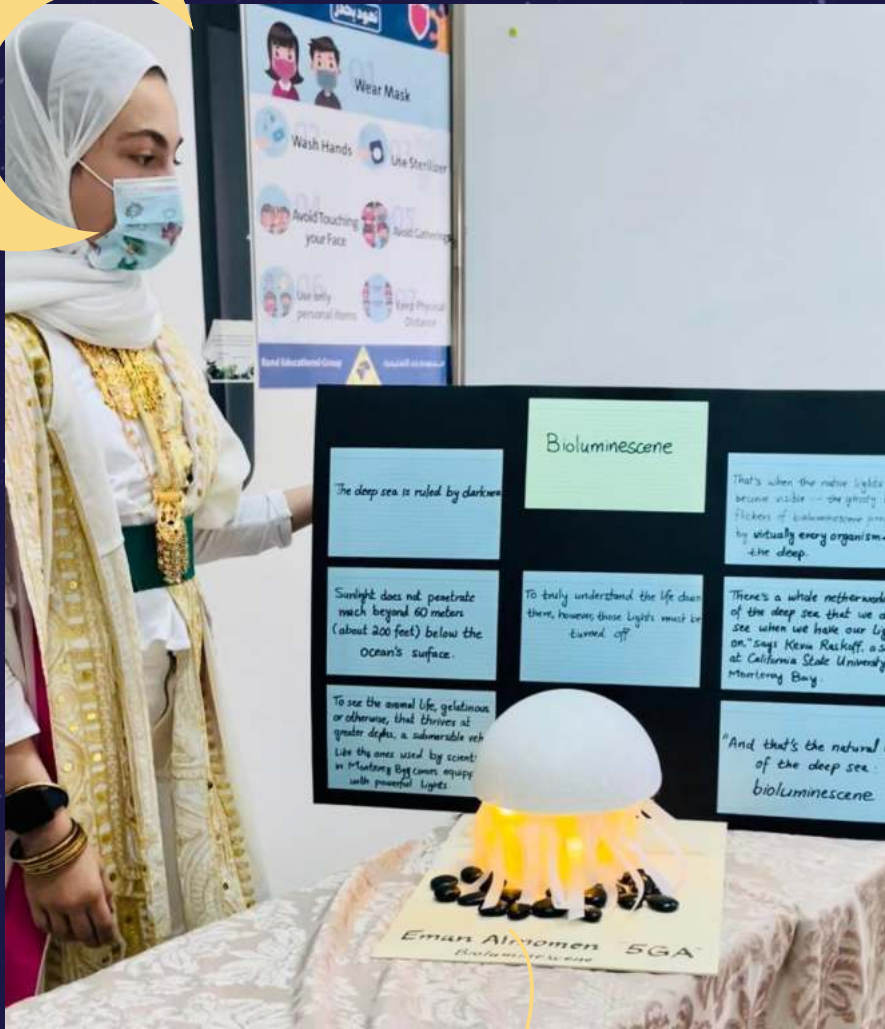
## Share below the summary based on – Diagrams, pictures and different point of view.. About the Incan Quipu.

It was used as a calculator and used for fun and the most quipus were not preserved but about 600 of them still remain intact quipus are made with woolstrings and cotton sometimes hundreds of them attached to a thicker horizontal cord both of archaeologists and the historians have tried to figure out how the quipus work





# THE EXPLORATION JOURNEY LEADS TO DISCOVERIES,





# LEARNING TO LOVE, LOVING TO LEARN THROUGH COMMITMENT AND COURAGE



Sent in Padlet

Jana Albashrawi

Think - Pair - Share

Outer Planets

1. The outer planets have planets that are small and big and they all have gassy surface.

2. The biggest outer planet is Saturn and the smallest Neptune and so far away from the sun.

3. I noticed that how the colors that were dark and light and it was getting smaller and smaller.

5B Class

I'm an inquirer and I researched and explored many things about the moon phases which helped me develop my research skills. And because I'm a risk taker I worked on the model without being scared

Leen Baha Alsaif  
G5A

Mercury is the closest to the sun. It's slightly bigger than the earth.

Venus is the second planet. It is about the same size of the earth.

Earth the earth is the third planet that is closest to the sun.

Jupiter is the largest planet in the solar system.

Saturn is the sixth planet. Saturn is very large.

Neptune is the eighth planet in the solar system.

Mars is the fourth planet. Mars has two very small and deeply eroded moons.

Uranus is the seventh planet. The planet is so cold and has many rings and moons.





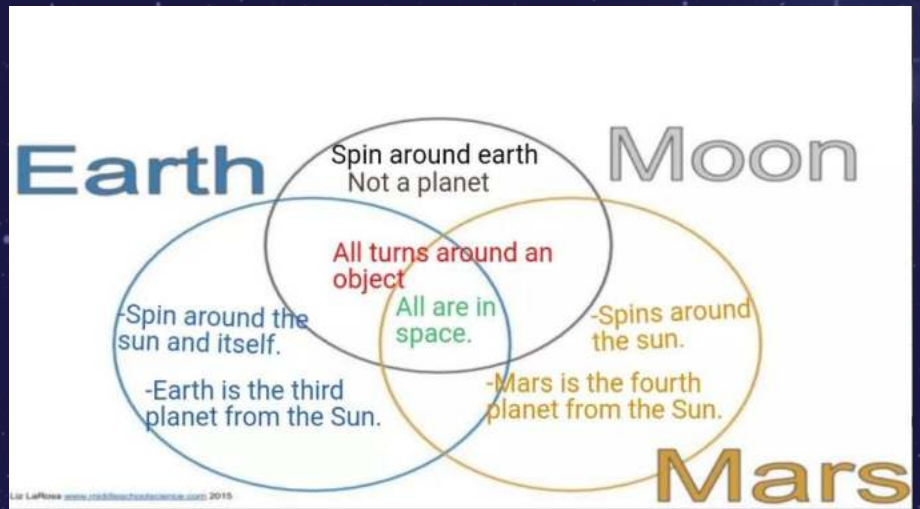
# A bigger picture of the Venn diagram about different planets & students research.

**mercury**  
 1 Mercury is the closest planet to the Sun. Mercury is also the smallest planet in the Solar System.

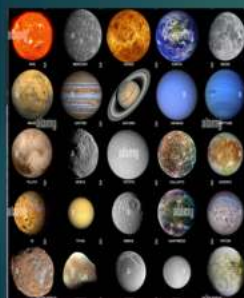
**venus**  
 2 Venus is the hottest planet. A day on Venus is longer than a year.

**Earth**  
 3 It is the only planet that has organic resources and that humans can live in.

**Mars**  
 4 Mars is the second smallest planet in the Solar System.



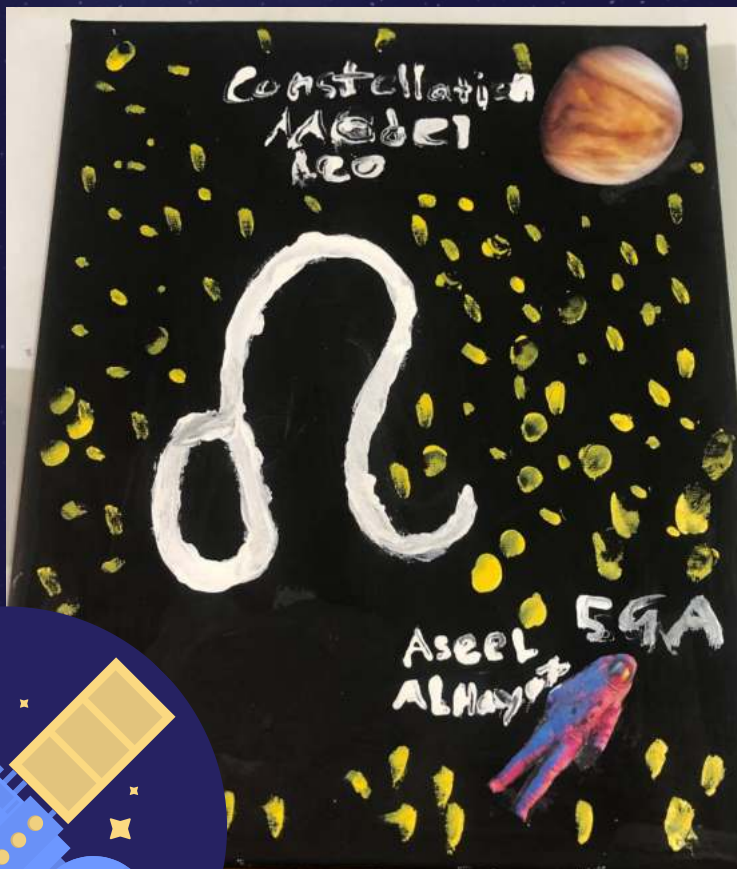
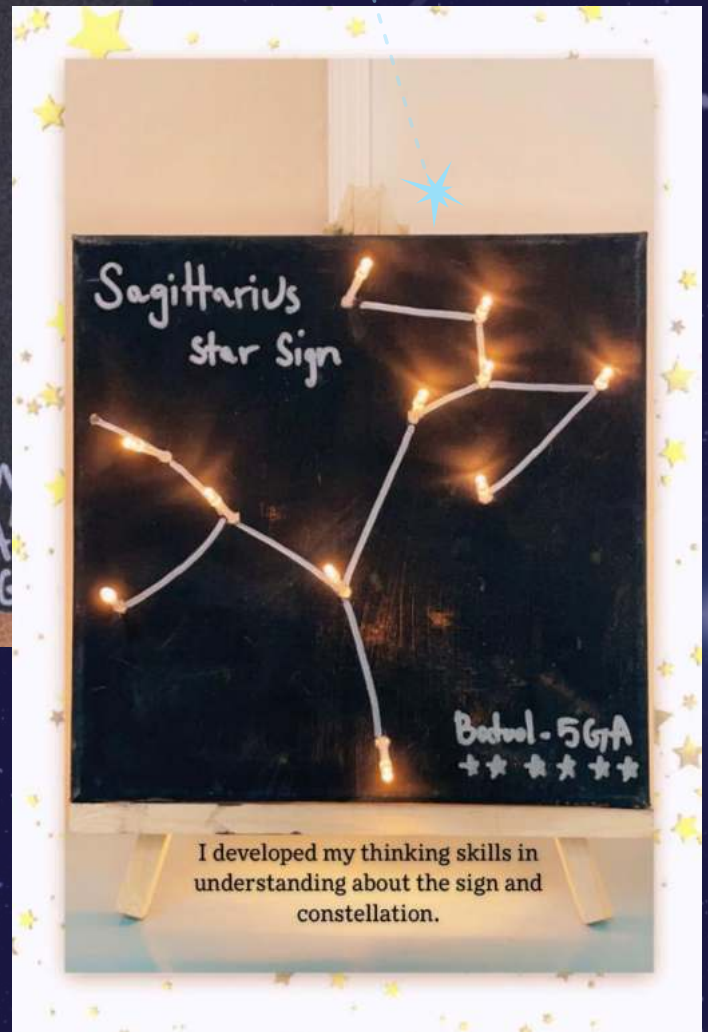
## Planets



THE FOUR LARGE OUTER WORLDS — JUPITER, SATURN, URANUS AND NEPTUNE — ARE SOMETIMES CALLED THE JOVIAN OR "JUPITER-LIKE" PLANETS BECAUSE OF THEIR ENORMOUS SIZE RELATIVE TO THE TERRESTRIAL PLANETS. THEY'RE ALSO MOSTLY MADE OF GASES LIKE HYDROGEN, HELIUM AND AMMONIA RATHER THAN OF ROCKY SURFACES, ALTHOUGH ASTRONOMERS BELIEVE SOME OR ALL OF THEM MAY HAVE SOLID CORES.



# MODEL OF CONSTELLATIONS STUDENTS WERE PRINCIPLED AND BALANCED WORKING ON THE MODEL.



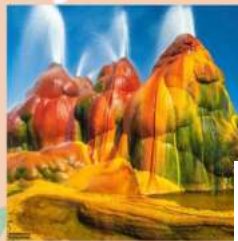


# Students had an opportunities and new understandings

The Students made a discovery on any new place, things or an animal and create a project.

## Fly Geyser

By: Ayah  
mohammed al  
ibrahim  
5GB



Fly Geyser is a hot bubble in the Black Rock Desert of Nevada, owned by a person named "Fly Ranch" and located on a private cattle ranch in Washoe County.

### Washoe County's Fwara Fly Al-Hara

Although this unique and distinctive spring can be seen from the public road, it is only accessible by a dirt road, and the farm's fence is high and its gate is closed, many people attempt to climb the fence to have a closer look at this unfamiliar landmark

Several groups attempted to purchase the land and the hot spring in order to transform it into a reserve and offer it to the public, but their efforts were unsuccessful

Human error collided with the forces of geothermal pressure to create the flying hot spring. This phenomena, which was discovered by coincidence in 1916 while drilling a well, is not entirely natural. The well continued to run regularly for decades, but in 1964, hot water driven by geothermal heat began to flow out of a small opening in the well and reach the surface. The dissolved minerals continued to climb and build up on top of one another, eventually forming the hill on which the water spring is found. This hill's height has risen to 1.5 meters and is continuing to rise.

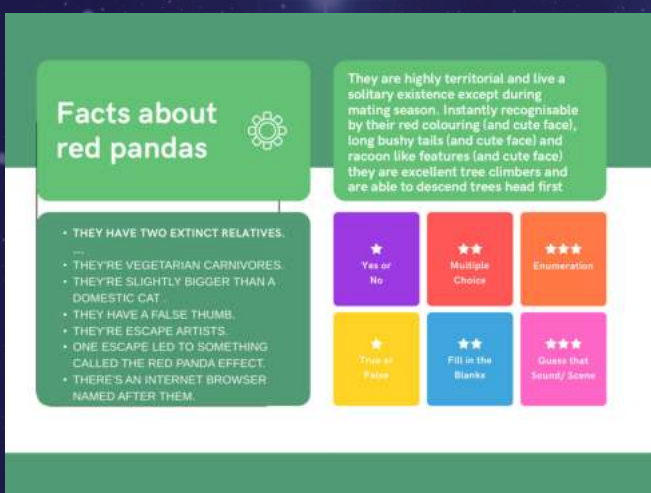
Water has been pumped from the spring till today, and it has reached a height of 1.5 meters





Students had an opportunities and new understandings

The Students made a discovery on any new place, things or an animal and create a project.





# BUILDING IN BRILLIANCE

WHAT A PLEASURE IT IS TO SEE THE OUR UNIVERSE STUDENTS DEVELOPING AND DEMONSTRATING AN UNDERSTANDING OF THE IB LEARNER PROFILE WHICH IS CENTRAL TO THE TEACHING AND LEARNING AT OUR SCHOOL!



In this UOI I have explored about space and our teacher gave us information that never new about I was so curious in the UOI, Our teacher taught us many interesting facts like the inner, out planets, And we worked as a team in the actives and after this UOI I became more knowledgeable

**Batool Ali Alowa**